

# HTP/G PUSH AND GEAR TRAVEL TROLLEYS

## Push trolley model HTP Gear trolley model HTG

Capacities: 500 - 20000kg

The trolley enables the exact positioning or easy traversing of large loads with either manual or powered hoisting equipment.

### Features include:

- It has excellent rolling features due to machined steel wheels mounted on prelubricated, encapsulated ball bearings.
- Adjustable to fit a wide range of beam widths and profiles (e.g. INP, IPE and IPB).
- Adjustments are made by rotating the clevis load bar which also ensures the centred positioning of the hoist in the clevis – no creeping to the left or the right.
- The trolley wheels are designed for a max. beam profile incline of 14 % (DIN 1025 - part 1).
- Trolleys are in accordance with the UVV and machinery directives.

### Options:

- Rotating hand chain guide.
- Lock nuts.
- Stainless steel hand chain.
- Buffers.
- ATEX classification.
- Locking device to secure the trolley in position on the beam (park position e.g. on ships).



Available in explosion proof version!



### HTP (PUSH TRAVEL)

Capacity (WLL) kg	Beam width mm	Weight kg	Standard units £	Corrosion resistant £	Capacity (WLL) kg	Beam width mm	Weight kg	Standard unit £	Corrosion resistant £
<b>Type 'A'</b>					<b>Type 'B'</b>				
500	50 - 220	8.0	<b>£78</b>	£165	500	160 - 300	10.6	<b>£88</b>	£379
1000	50 - 220	9.0	<b>£109</b>	£220	1000	160 - 300	12.0	<b>£121</b>	£429
2000	66 - 220	16.0	<b>£146</b>	£284	2000	160 - 300	19.3	<b>£163</b>	£469
3000	74 - 220	32.0	<b>£246</b>	-	3000	180 - 300	35.8	<b>£264</b>	-
5000	90 - 220	48.0	<b>£375</b>	-	5000	180 - 300	52.2	<b>£401</b>	-

### HTG (GEAR TRAVEL)

Capacity (WLL) kg	Beam width mm	Weight kg	Standard units £	Corrosion resistant £	Capacity (WLL) kg	Beam width mm	Weight kg	Standard unit £	Corrosion resistant £
<b>Type 'A'</b>					<b>Type 'B'</b>				
500	50 - 220	9.7	<b>£145</b>	£271	500	160 - 300	12.6	<b>£157</b>	£379
1000	50 - 220	11.2	<b>£174</b>	£303	1000	160 - 300	14.1	<b>£186</b>	£429
2000	66 - 220	18.0	<b>£213</b>	£394	2000	160 - 300	21.3	<b>£226</b>	£469
3000	74 - 220	35.4	<b>£283</b>	£489	3000	180 - 300	39.2	<b>£303</b>	£625
5000	90 - 220	51.8	<b>£388</b>	£689	5000	180 - 300	56.0	<b>£419</b>	£829
-	-	-	-	-	10000	125 - 310	104.0	<b>£725</b>	£1360
-	-	-	-	-	20000	125 - 310	230.0	<b>£1972</b>	£3057

- 2.5 metre hand chain drop is fitted as standard to the HTG trolleys to suit 3 metre HOL.
- £10 per additional metre hand chain drop of HTG standard zinc plated hand chain.
- Optional beam locking device available on request. Please contact the sales team for your quotation.
- Locking nuts are also available on request - 500kg 4300006187 - £5, 1000kg 4300006188 - £9, 2000kg 4300006189 - £15.

# CTP 'INTEGRAL' TRAVEL TROLLEY BEAM CLAMPS

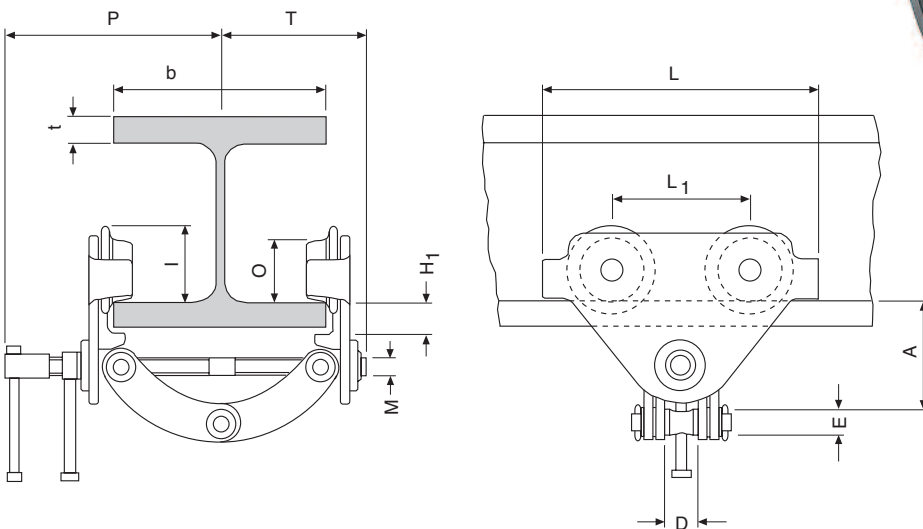
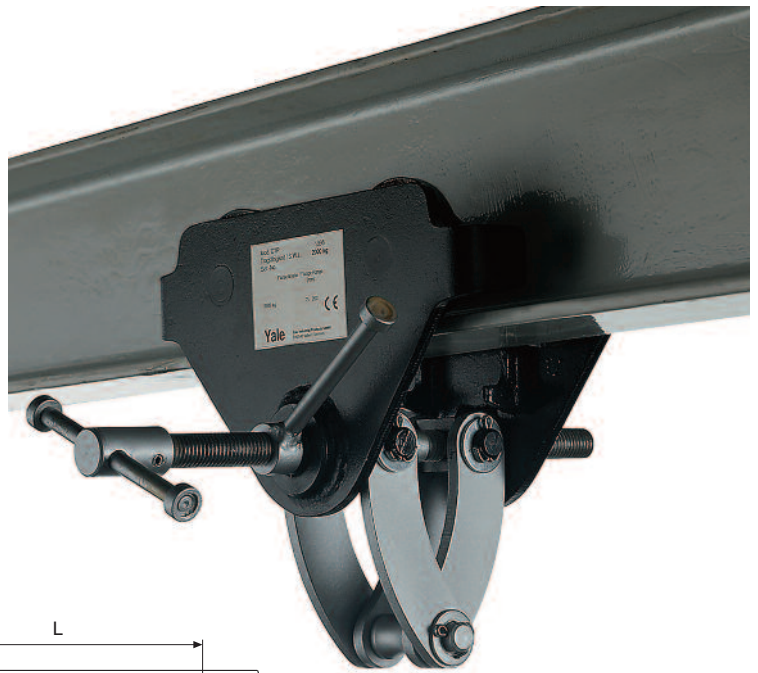
## Trolley clamp model CTP

Capacities: 1000 - 3000kg

The easy installation to any beam makes the CTP suitable for fixing to any hoists, pulleys and loads you wish to move.

It can be adjusted quickly to the beam width by turning the main spindle and safety is ensured by the special locking lever.

The spindle and snap-pin stops are galvanised to protect against corrosion.



Model	Dimensions											
	A mm	D mm	E mm	H1 mm	I mm	L mm	L1 mm	M mm	O mm	P mm	T mm	t max. mm
CTP 1	82 - 109	26	22	20	53	160	75	M12	46	153	105	15
CTP 2-A	106 - 155	42	20	24	71.5	260	130	M18	60	205	139	25
CTP 2-B	136 - 191	42	20	24	71.5	260	130	M18	60	255	189	25
CTP 3-A	128 - 171	50	22	30.5	95.5	310	150	M24	80	220	155	25
CTP 3-B	150 - 212	50	22	30.5	95.5	310	150	M24	80	280	215	25

Model	Capacity (WLL) kg	Article number	Beam width mm	Minimum curve radius mm	Weight kg	Price £
CTP - 1	1000	05500024	60 - 150	0.6	2.5	<b>£122</b>
CTP - 2A	2000	05500025	75 - 200	0.9	9.9	<b>£173</b>
CTP - 2B	2000	05500026	200 - 300	0.9	10.3	<b>£237</b>
CTP - 3A	3000	05500027	75 - 200	1.15	17.5	<b>£242</b>
CTP - 3B	3000	05500028	200 - 320	1.15	19.5	<b>£269</b>

**!** Yale hoists and trolleys are not designed for passenger elevation applications and must not be used for this purpose.



### Push and geared type trolley model HTP and model HTG

Capacity 500 - 20000 kg

The trolley enables the exact positioning or easy traversing of large loads with either manual or powered hoisting equipment.

#### Features

- It has excellent rolling features due to machined steel wheels mounted on prelubricated, encapsulated ball bearings.
- Adjustable to fit a wide range of beam widths and profiles (e.g. INP, IPE and IPB).
- Adjustments are made by rotating the clevis load bar which also ensures the centred positioning of the hoist in the clevis – no creeping to the left or the right.
- The trolley wheels are designed for a max. beam profile incline of 14% (DIN 1025 - part 1).
- Trolleys are in accordance with the UVV and machinery directives.

#### Options

- Rotating hand chain guide.
- Stainless steel hand chains.
- Buffers
- Corrosion resistant version
- Explosion proof version
- Locking device to secure the trolley in position on the beam (park position e.g. on ships).

**!** Yale hoists and trolleys are not designed for passenger elevation applications and must not be used for this purpose.

## Technical data model HTP and model HTG

Model	EAN-No. 4025092*	Capacity kg	Size	Beam flange width b mm	Beam flange thickness t max. mm	Curve radius min. m	Hand effort at WLL daN	Weight* kg	Weight* with locking device kg
HTP 500	*054874	500	A	50 - 220	25	0.9	-	8.0	14.5
HTP 1000	*054881	1000	A	50 - 220	25	0.9	-	9.0	17.0
HTP 2000	*054898	2000	A	66 - 220	25	1.15	-	16.0	24.0
HTP 3000	*054904	3000	A	74 - 220	25	1.4	-	32.0	41.2
HTP 5000	*054911	5000	A	90 - 220	25	1.8	-	48.0	58.5
HTP 500	*054928	500	B	160 - 300	40	0.9	-	10.6	17.1
HTP 1000	*054935	1000	B	160 - 300	40	0.9	-	12.0	20.0
HTP 2000	*054942	2000	B	160 - 300	40	1.15	-	19.3	27.3
HTP 3000	*054959	3000	B	160 - 300	40	1.4	-	35.8	45.0
HTP 5000	*054966	5000	B	180 - 300	40	1.8	-	52.2	62.7
HTG 500	*074711	500	A	50 - 220	25	0.9	3	9.7	16.2
HTG 1000	*074728	1000	A	50 - 220	25	0.9	6	11.2	19.2
HTG 2000	*074735	2000	A	66 - 220	25	1.15	7	18.0	26.0
HTG 3000	*074742	3000	A	74 - 220	25	1.4	7	35.4	44.6
HTG 5000	*074759	5000	A	90 - 220	25	1.8	9	51.8	62.3
HTG 500	*074766	500	B	160 - 300	40	0.9	3	12.6	19.1
HTG 1000	*074841	1000	B	160 - 300	40	0.9	6	14.1	22.1
HTG 2000	*074773	2000	B	160 - 300	40	1.15	7	21.3	29.3
HTG 3000	*074780	3000	B	160 - 300	40	1.4	7	39.2	48.4
HTG 5000	*074797	5000	B	180 - 300	40	1.8	9	56.0	66.5
HTG 8000	*074803	8000	B	125 - 310	40	1.8	14	104.0	-
HTG 10000	*074810	10000	B	125 - 310	40	1.8	14	104.0	-
HTG 15000	*074827	15000	B	125 - 310	40	5.0	29	230.0	-
HTG 20000	*074834	20000	B	125 - 310	40	5.0	29	230.0	-

\*Weight HTG: without hand chain



Available in explosion proof version.

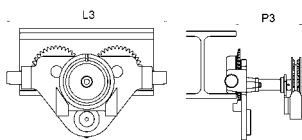
# Hoisting Equipment Trolleys

## Dimensions model HTP

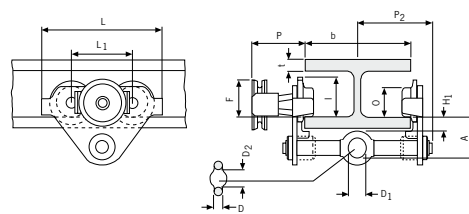
Model	HTP 500-A	HTP 1000-A	HTP 2000-A	HTP 3000-A	HTP 5000-A	HTP 500-B	HTP 1000-B	HTP 2000-B	HTP 3000-B	HTP 5000-B
A, mm	77	82.5	98.5	114	132.5	92	97.5	113.5	129	147.5
D, mm	16	17	22	26	33	16	17	22	26	33
D1, mm	25	30	40	48	60	25	30	40	48	60
D2, mm	30	35	47	58	70	30	35	47	58	70
F1, mm	46	46	46	46	45.5	46	46	46	46	45.5
H1, mm	30.5	30.5	30.5	30	30	45.5	45.5	45.5	45	45
I (HTP), mm	71.5	71.5	95.5	131	142.5	71.5	71.5	95.5	131	142.5
L, mm	260	260	310	390	450	260	260	310	390	450
L1, mm	130	130	150	180	209	130	130	150	180	209
O, mm	60	60	80	112	125	60	60	80	112	125
P1, mm	168	168	168	168	168	168	168	168	168	168
P2, mm	146	150	155	160	167.5	146	150	155	160	167.5
L3, mm	346	346	396	476	556	346	346	396	476	556

## Dimensions model HTG

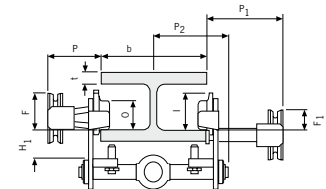
Model	HTG 500-A	HTG 1000-A	HTG 2000-A	HTG 3000-A	HTG 5000-A	HTG 500-B	HTG 1000-B	HTG 2000-B	HTG 3000-B	HTG 5000-B	HTG 8000-B	HTG 10000-B	HTG 15000-B	HTG 20000-B
A, mm	77	82.5	98.5	114	132.5	92	97.5	113.5	129	147.5	276	276	270	270
B, mm	-	-	-	-	-	-	-	-	-	-	52	52	70	70
D, mm	16	17	22	26	33	16	17	22	26	33	30	30	35	35
D1, mm	25	30	40	48	60	25	30	40	48	60	80	80	110	110
D2, mm	30	35	47	58	70	30	35	47	58	70	114	114	155	155
F (HTG), mm	91.5	91.5	90.5	107.5	149.5	91.5	91.5	90.5	107.5	149.5	113	113	113	113
F1, mm	46	46	46	46	45.5	46	46	46	46	45.5	77	77	-	-
H1, mm	30.5	30.5	30.5	30	30	45.5	45.5	45.5	45	45	45	45	45	45
I (HTG), mm	76.5	76.5	98	132.5	148.5	76.5	76.5	98	132.5	148.5	170	170	170	170
L, mm	260	260	310	390	450	260	260	310	390	450	430	430	870	870
L1, mm	130	130	150	180	209	130	130	150	180	209	200	200	200	200
L2, mm	-	-	-	-	-	-	-	-	-	-	-	-	115	115
O, mm	60	60	80	112	125	60	60	80	112	125	150	150	150	150
P (HTG), mm	110	110	110	110	110	110	110	110	110	110	163	163	163	163
P1, mm	168	168	168	168	168	168	168	168	168	168	193	193	-	-
P2, mm	146	150	155	160	167.5	187	187	189.5	191.5	191.5	-	-	-	-
T, mm	-	-	-	-	-	-	-	-	-	-	270	270	270	270
L3, mm	346	346	396	476	556	346	346	396	476	556	536	536	976	976
P3, mm	194	194	194	195	195	194	194	194	195	195	-	-	-	-



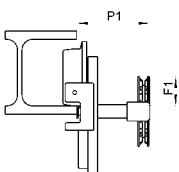
Model HTG 500 - 5000 kg  
with rotating hand chain guide and  
buffers



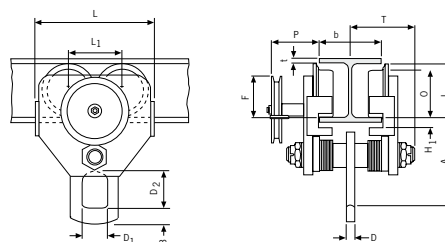
Model HTP/G 500 - 5000 kg



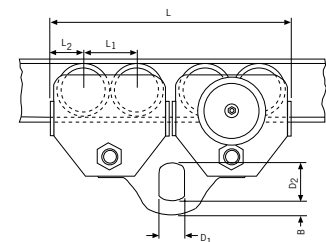
Model HTP/G 500 - 5000 kg,  
with locking device



Model HTG 10000 kg,  
locking device



Model HTG 10000 kg



Model HTG 20000 kg

### Trolley clamp model CTP

Capacity 1000 - 3000 kg

Easy fitting to overhead beams for the attachment and transport of loads.

#### Features

- Central threaded spindle provides quick adjustment to the required beam width.
- Threaded spindle and clevis are zinc-plated for added corrosion protection.

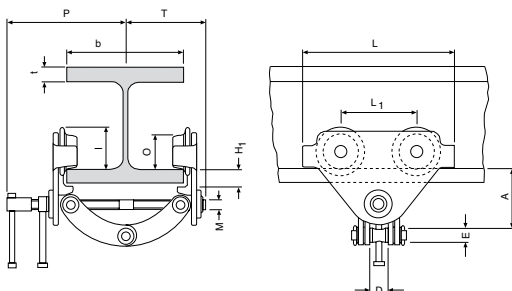


#### Technical data model CTP

Model	EAN-No. 4025092*	Capacity kg	Beam flange width b mm	Curve radius min. m	Weight kg
CTP 1-A	*063012	1000	60 - 150	0.6	2.5
CTP 2-A	*055437	2000	75 - 200	0.9	9.9
CTP 2-B	*055444	2000	200 - 300	0.9	10.3
CTP 3-A	*055451	3000	75 - 200	1.15	17.5
CTP 3-B	*055468	3000	200 - 320	1.15	19.5

#### Dimensions model CTP

Model	CTP 1-A	CTP 2-A	CTP 2-B	CTP 3-A	CTP 3-B
A, mm	82 - 109	106 - 155	136 - 191	128 - 171	150 - 212
D, mm	26	42	42	50	50
E, mm	22	20	20	22	22
H1, mm	20	24	24	30.5	30.5
I, mm	53	71.5	71.5	95.5	95.5
L, mm	160	260	260	310	310
L1, mm	75	130	130	150	150
M, mm	M12	M18	M18	M24	M24
O, mm	46	60	60	80	80
P, mm	153	205	255	220	280
T, mm	105	139	189	155	215
tmax., mm	15	25	25	25	25



**!** Yale hoists and trolleys are not designed for passenger elevation applications and must not be used for this purpose.